

Appendix E

Landscape Architecture Report prepared by Taylor Brammer Landscape Architects



Dunmore Street, Pendle Hill

Planning Proposal

Landscape Architecture

Contents

1. Contents

2. Site Analysis

3. Design Principles

4. Masterplan

2

3

12

21

Amendment register

DOCUMENT TITLE	REVISION	DATE	STATUS	REVIEWED	CHECKED
Landscape Architecture Planning Proposal	A	17.02.2019	FINAL	DMT	AL
Landscape Architecture Planning Proposal	P2	20.12.2019	FINAL DRAFT	DMT	AL
Landscape Architecture Planning Proposal	P1	16.12.2019	PRELIMINARY	DMT	AL

Prepared by

Taylor Brammer Landscape Architects Pty Ltd

Sydney Studio
218 Oxford Street
Woollahra NSW 2025
Australia
tel: 61 2 9387 8855
Sydney@taylorbrammer.com.au

South Coast Studio
26 Moore Street Austinmer
PO Box 3064 Austinmer NSW 2515
Australia
tel: 61 2 4267 5088
southcoast@taylorbrammer.com.au

Prepared for

Fresh Hope Care

Level 1, 3 Rider Blvd
Rhodes, New South Wales 2138

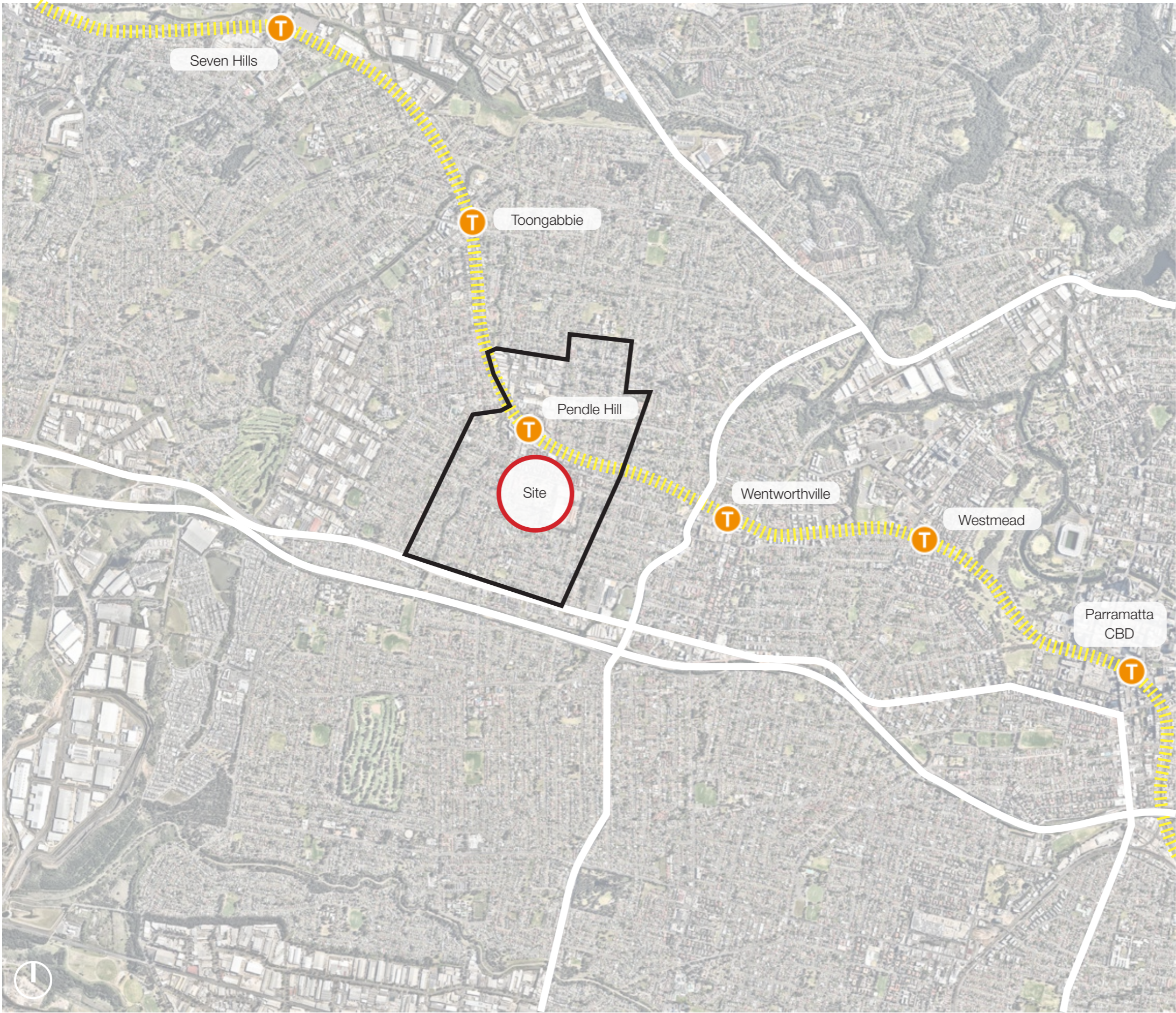


Site Analysis



01





Current view of Dunmore House from carriage drive



Suburban Context and Landscape Patterns

The subject site is located in a well connected pocket of western Sydney with strong public and private transport connections available. Located adjacent to the Western Train line and 3 stops from Parramatta CBD, the site has strong access to Sydney’s second CBD and Westmead Hospital. The recently upgraded M4 motorway, Cumberland Highway and the Great Western Highway are major roads which border the suburb boundary and create strong opportunities for connection to greater Sydney. Pendle Hill is located within Western Sydney and bounded by the suburbs of Girraween, Wentworthville, Toongabbie and Greystanes. Pendle Hill and the subject site are within Cumberland Council LGA.

Legend




-  Site Location
-  The Western Train line and Stations
-  Major roads
-  Pendle Hill Suburb Boundary



Local Context

The site is located centrally within the suburb boundaries of Pendle Hill and to the south of the Pendle Hill train station and associated local shopping strip. Local public transport is readily accessible from the site and within pedestrian access. This includes a 5 min walk to Pendle Hill train station and access to existing bus stops on Dunmore Street and two on Pendle Way immediately opposite the site.

Legend

-  Site Location
-  The Western Train line and Stations
-  Major roads

1.3 | Historical Reference 1943 Aerial



1943 aerial showing landscape patterns and built form.
Source: NSW Spatial Services, SIX Maps

Heritage Buildings



1. Dunmore House
19th century Victorian homestead located on the top of hill with view to and from surrounding streets.



2. Ashwood House
Mid 20th century brick structure with circular carriage drive fronting Dunmore Street



3. Carriageway
Existing 19th century carriage way addressing Dunmore House to Dunmore Street. Several specimen trees are evident from 1943 aerial which remain today.

1.4 | Existing Landscape Precincts



Current Precincts

- ① **19th Century Heritage Precinct**
High value landscape setting and grounds of Dunmore House, Circa 1930s.
- ② **Ashwood House Precinct**
Ashwood House mid 20th century building
- ③ **Residential Precinct**
Existing aged care facilities including RACF, ILU and Shaw House, late 20th century

Legend

- Site boundary
- High value Heritage Precinct
- Dunmore House Carriage Drive
- Ashwood House Precinct
- Residential Precinct



Open Space Character



1. Carriage Drive
Existing driveway wandering through open lawn creating framed views of Dunmore House



2. Open Lawn with Specimen Trees
Specimen trees in lawn typical of 1930's approach.



3. Residential Cultural Landscape
Fine detailed open spaces dominated by driveways, direct footpaths and sporadic planting typical of residential aged care communities

Legend

- Site boundary
- Heritage Precinct
- Heritage Curtilage Trees
- Carriage Drive
- Primary views to heritage items from streetscape



Existing Site Topography

The site's topography can be characterised as gently undulating with Dunmore House being located at the high point of the site at RL 64.50. Dunmore House is visible with clear sight lines from Dunmore Street from an existing view corridor in its elevated position. Ashwood House is elevated to a lesser extent from Dunmore Street at a RL of 54.50. The low point of the site is located at the junction of Dunmore Street and Pendle Way at RL 48.00

Legend

- Site boundary
- 0.5m Contours
- Site High Point
- Site Low Point
- Boundary RL point

1.7 | Existing Significant Trees



Significant trees



1. Ficus macrophylla
Existing mature Ficus specimen tree planting within open lawn setting. Adjacent to Dunmore House




2. Araucaria sp
Existing upright marker planting of various Araucaria species through central portion of site



3. Eucalyptus sp.
Various Eucalyptus species of mature and over mature nature located throughout heritage precinct

Legend

-  Ficus macrophylla
-  Araucaria sp.
-  Eucalyptus sp.
-  Camphor laurel



Significant heritage trees to former carriage way



Landscape character of heritage curtilage to Dunmore House



View to Dunmore House looking south



View of Dunmore House looking west



Specimen Fig tree in lawn



View of significant trees from Dunmore House

Design Principles



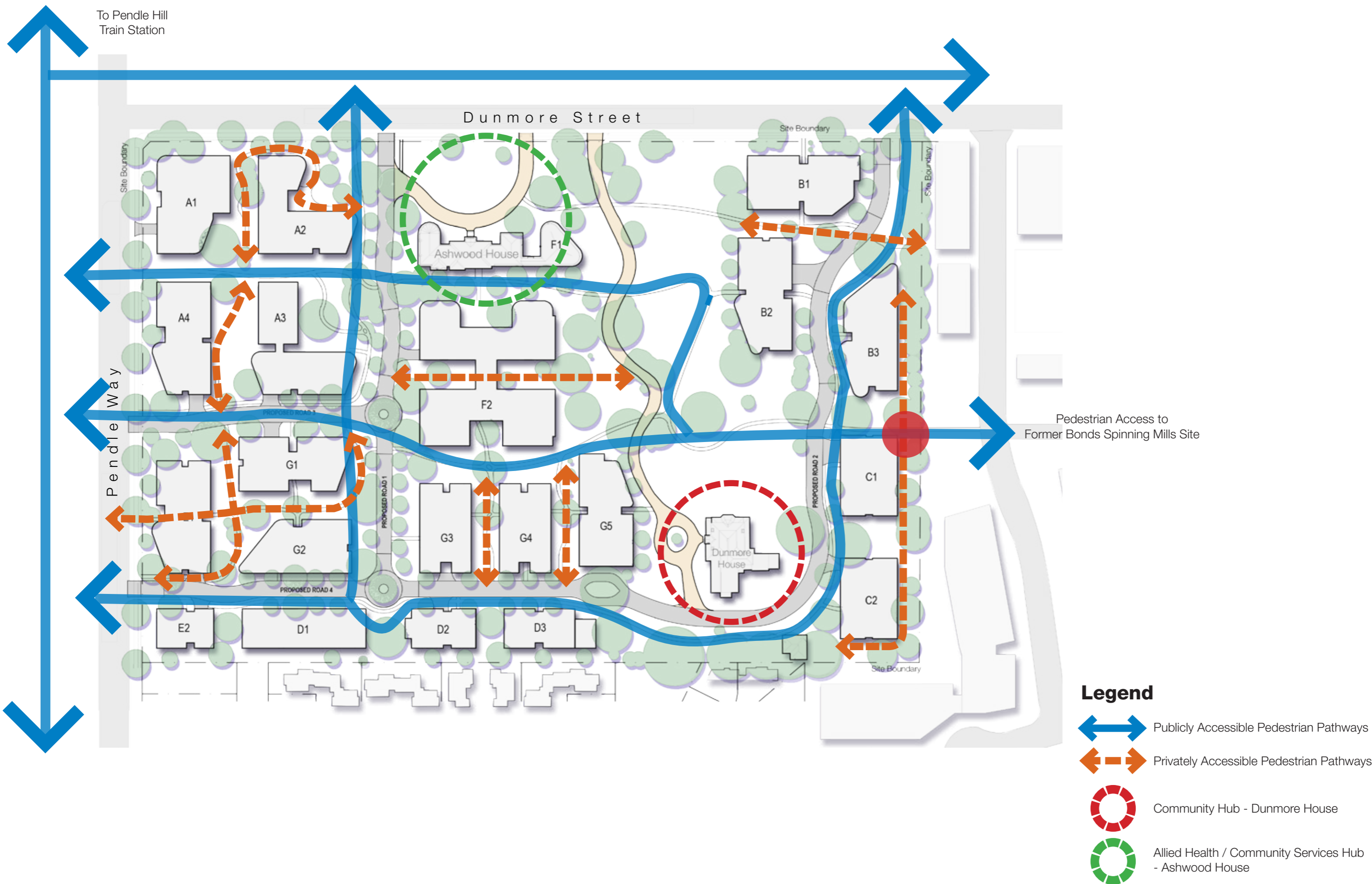
02

Dunmore House carriage way and entry

3.2 | Proposed Precincts



3.3 | Pedestrian Circulation



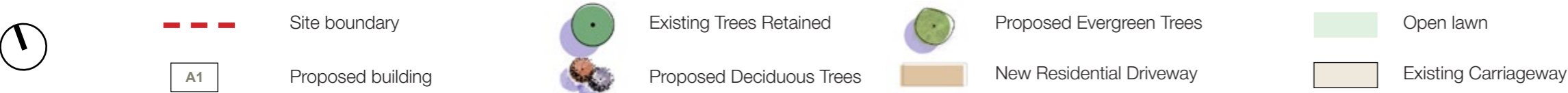
3.3 | Public and Private Zones



Masterplan context



Legend



3.5 | Heritage Curtilage - Dunmore House

Design Principles

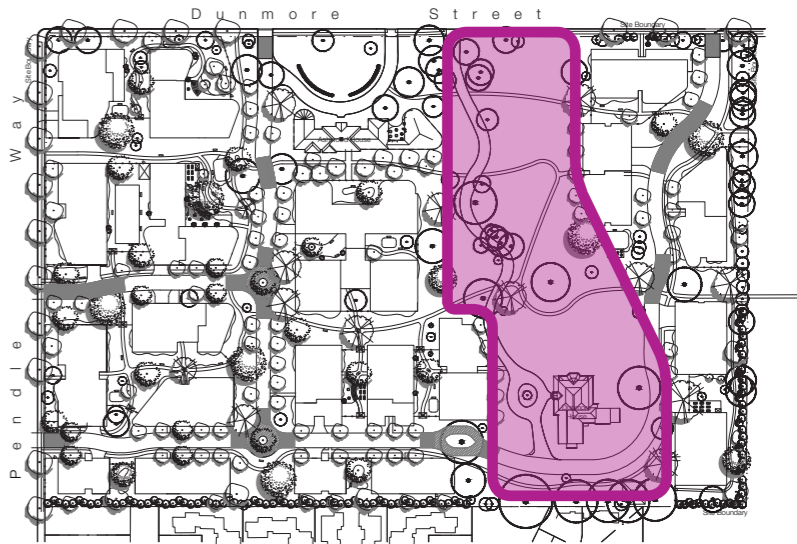
- Existing Dunmore House and surrounding landscape curtilage to be publicly accessible for the greater community benefit
- Existing landscape character of specimen trees in lawn retained as key way finding markers within greater setting of Pendle Hill
- Existing views from Dunmore Street to Dunmore House retained
- Pedestrian connectivity prioritised through creation of new supplementary path network
- Supplement existing significant trees with new screen planting to proposed built forms
- Children's community playground within heritage curtilage, near former Bonds site to create hub of activity.



Existing landscape character around Dunmore House retained and enhanced



Existing specimen Araucaria species retained as key way finding markers within greater setting of Pendle Hill



3.6 | Heritage Curtilage - Ashwood House

Design Principles

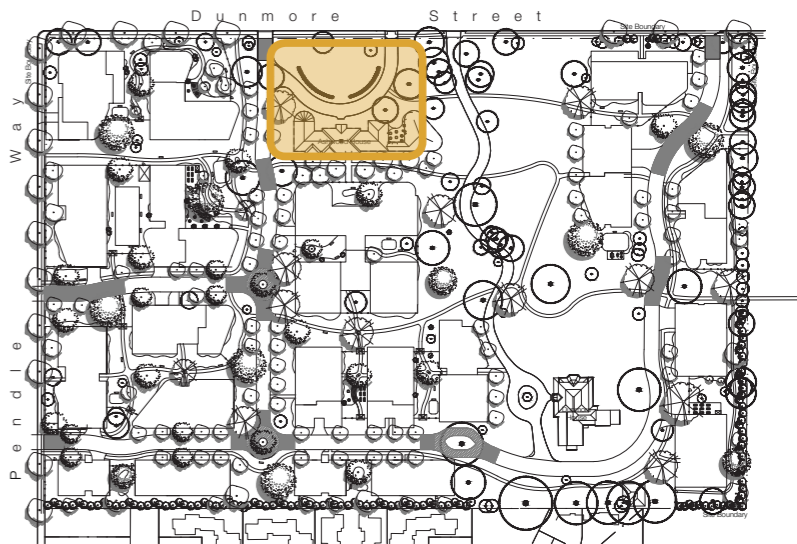
- Retain and enhance existing landscape setting of Ashwood House consisting of specimen trees and ornamental rose gardens.
- Supplementary evergreen trees and screening plants to eastern boundary
- Native frangipani trees to provide green connectivity link between rear of Ashwood House and RACF



Existing heritage Araucaria pines retained and supplementary planting to Ashwood House



Communal cafe and dining facilities to Ashwood House



3.7 | Community and Village Hubs

Design Principles

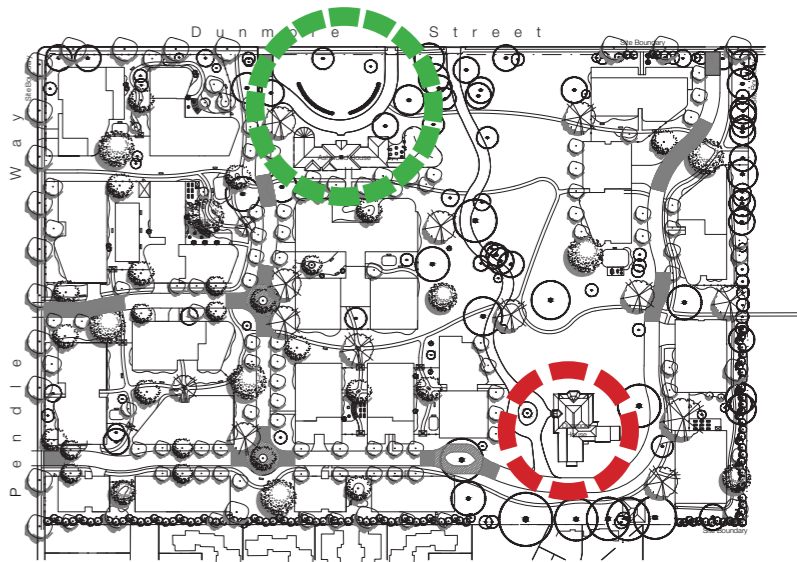
- Activation of Dunmore House as community “For Hire” space for the benefit of the greater community
- Activation of Ashwood House and setting through cafe for residential and community everyday use and gatherings.
- Pedestrian prioritised spaces and access through community hub to provide connection between heritage precinct and residential precincts
- Children’s community playground within heritage curtilage, near former Bonds site to create hub of activity.
- BBQ and cafe for community gatherings



Flexible communal open space around Dunmore House



Children’s community playground



3.8 | Green Spine

Design Principles

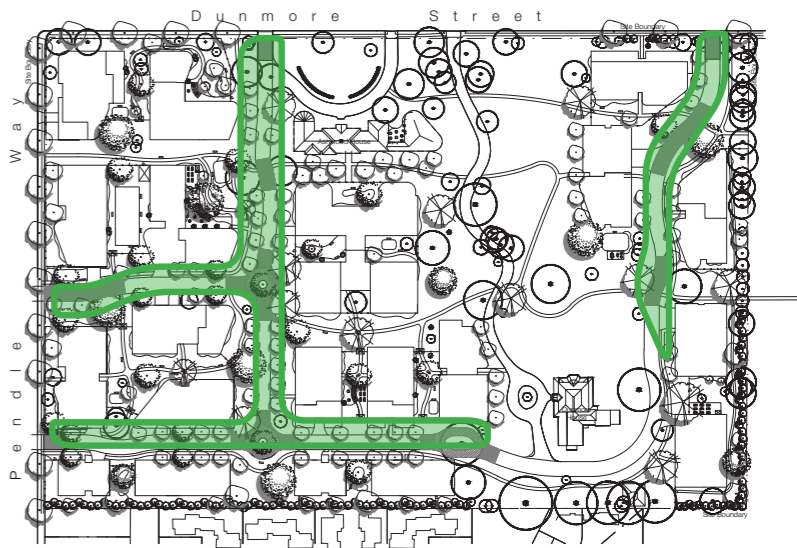
- Publicly accessible space
- Mix of large evergreen and deciduous trees to provide shade and seasonal colour interest
- Eucalyptus with tall crowning habit to allow solar access to street level.
- Large deciduous trees to road junctions as wayfinding measure and feature element.



Shared pedestrian and vehicular road with evergreen trees



Avenue of deciduous street trees



3.9 | Pedestrian Spaces

Design Principles

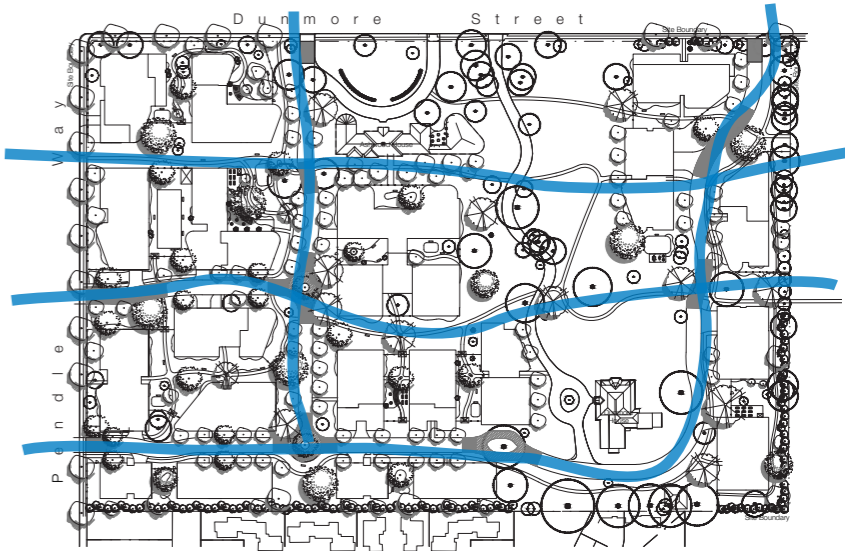
- Publicly accessible pedestrian routes created throughout site
- Path network with a variety of activities including playground and shaded seating areas.
- Future linkages to adjacent Former Bonds Spinning Mills Site redevelopment and retail centre



Communal gathering spaces with shade element



Green link to adjacent Former Bonds Spinning Mills Site redevelopment



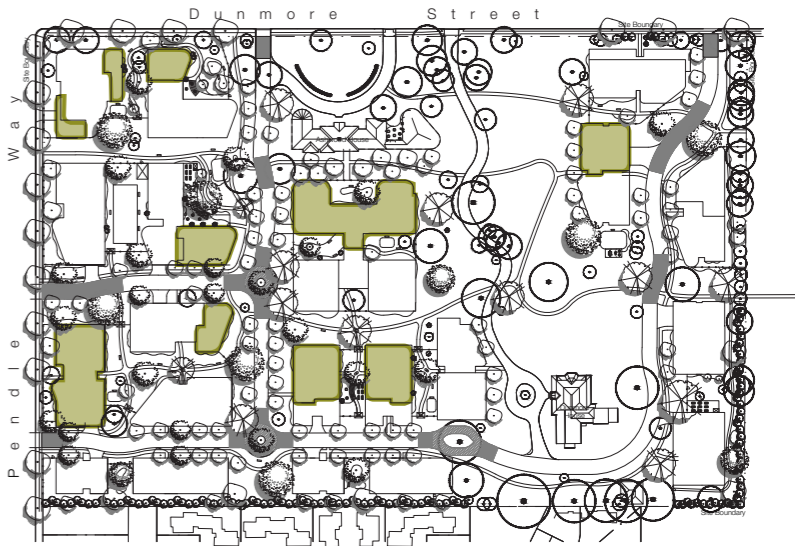
3.10 | Rooftop Gardens

Design Principles

- Combination of deciduous and evergreen planting to provide seasonal interest and protection
- Inclusion of spillover plants to soften environment and create sense of enclosure
- Provide shaded seating area and variety of activities for residential usage
- Opportunities to provide planted terraces and roof
- Communal BBQ and dining spaces for residents



Communal gathering and seating spaces for residents with shade element



3.11 | Pocket Parks

Design Principles

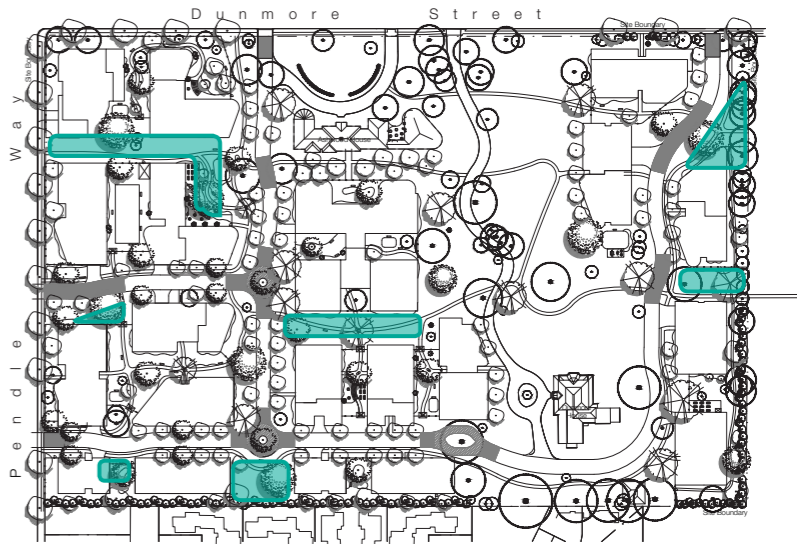
- Publicly accessible space
- Path network with a variety of activities including playground and shaded seating areas.
- Combination of evergreen and deciduous trees to provide seasonal interest while maintaining winter solar access
- Communal BBQ and dining spaces under pergola.



Communal gathering spaces with shade element



Provide active open spaces for community use



3.12 | Private Courtyards and Gardens

Design Principles

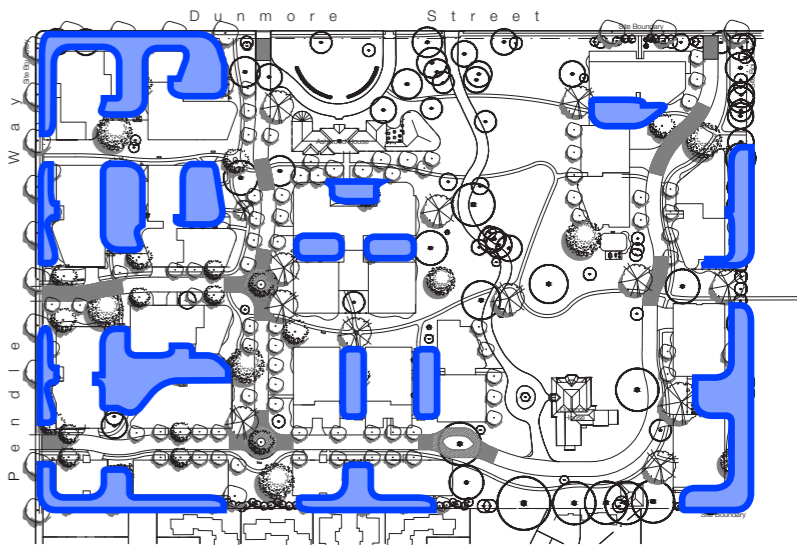
- Private area for seniors residence with gardens, outdoor dining, productive gardens and activity spaces
- Locked fences for privacy and security.
- Sensory planting for seasonal interest and health and wellbeing benefits.



Textural planting, seating and shade



Fenced courtyards for privacy



Masterplan



03

Masterplan



SCALE 1:1500 @ A3

0 15 30 60 90m

03.02.2020

Detail Plan - Private Courtyards and Public Pocket Parks



Feature Jacaranda Tree
Provides seasonal interest and vibrant colour to pocket park

Playground
With nature play, garden beds, and shade element over

Existing trees retained
Provides shade and scale

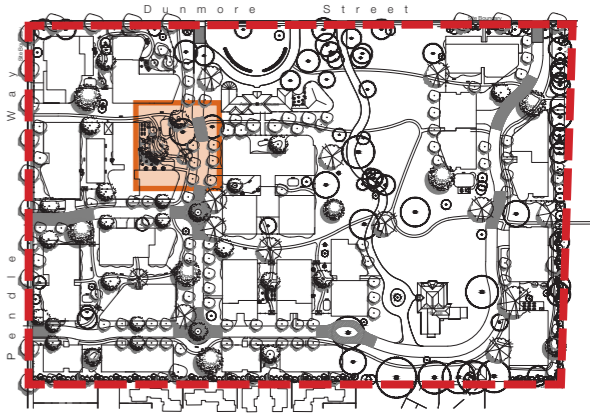
Productive Garden
To private courtyard with garden shed

Garden Bed with Feature Pine Tree
Provides greenery and screening between public pocket park and private courtyard.

Feature Evergreen Tree
Within junction of path to provide interest and shade.

Private Courtyard
With BBQ, dining facilities, water feature and shade structure. Fencing to separate individual private courtyards

Fencing to Private Courtyards
With lockable gate entry from common public areas.



Natural play area with native textural planting



Feature Jacaranda for seasonal interest and shade

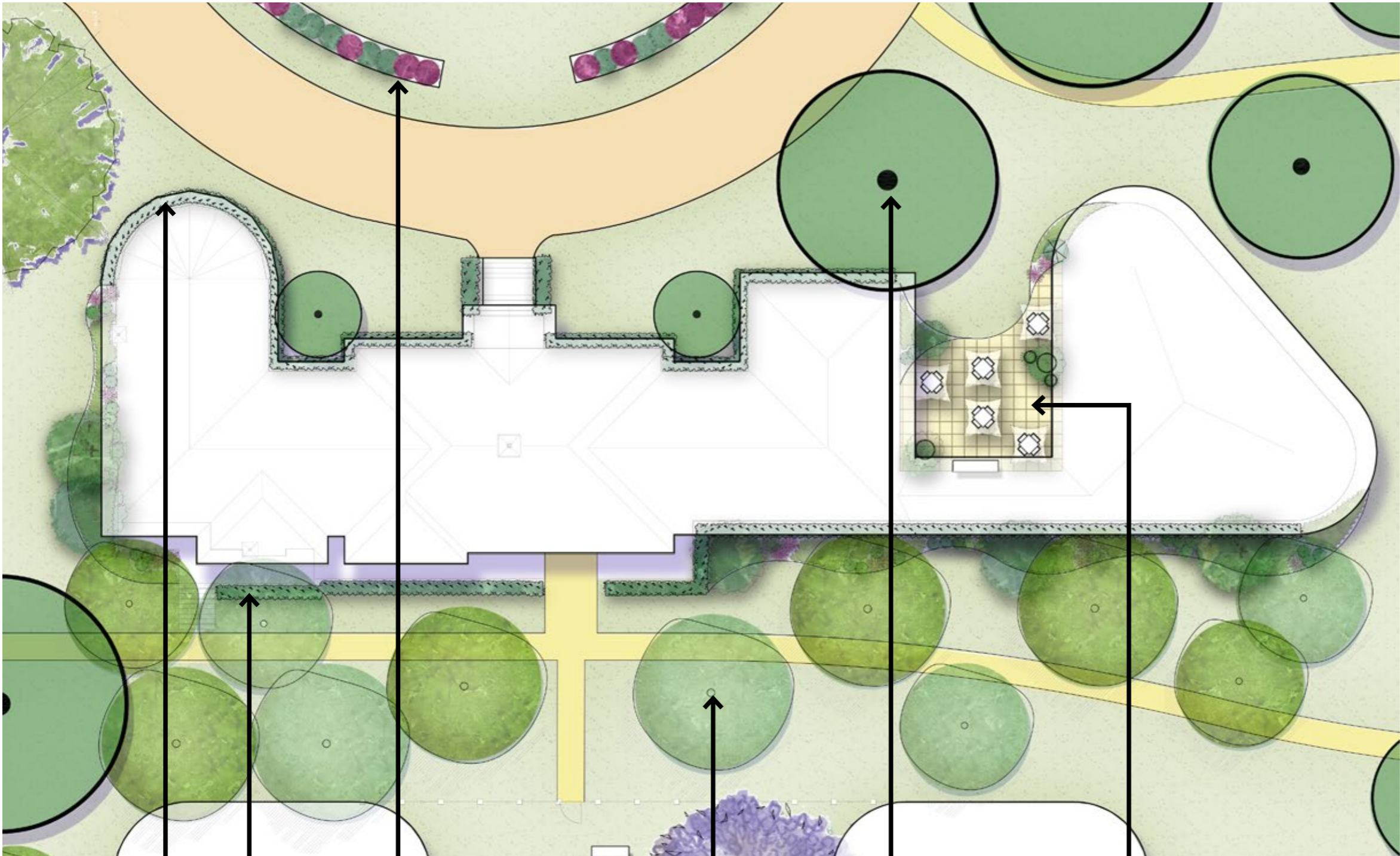


Outdoor dining with pergola for residents

SCALE 1:200 @ A3



Detail Plan - Ashwood House



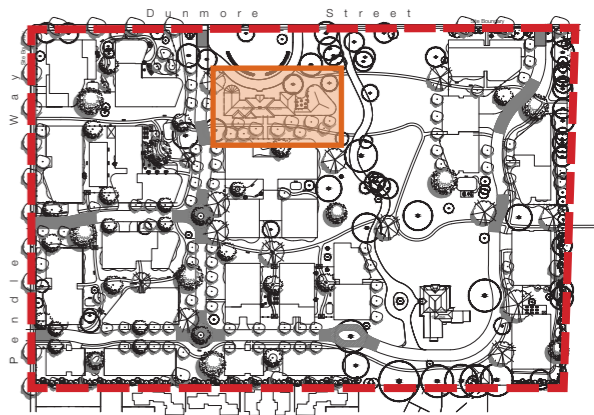
Hedging Planting
To perimeter of Ashwood House.

Rose Garden
To front of Ashwood House to provide heritage amenity

Native Frangipani Avenue
Provides green buffer between Ashwood House and RACF

Existing heritage trees retained
Provides shade and amenity

Cafe and Garden
Open to public, with outdoor seating.



KEY PLAN NTS



Avenue of native Frangipani



Rose planting to front of Ashwood House

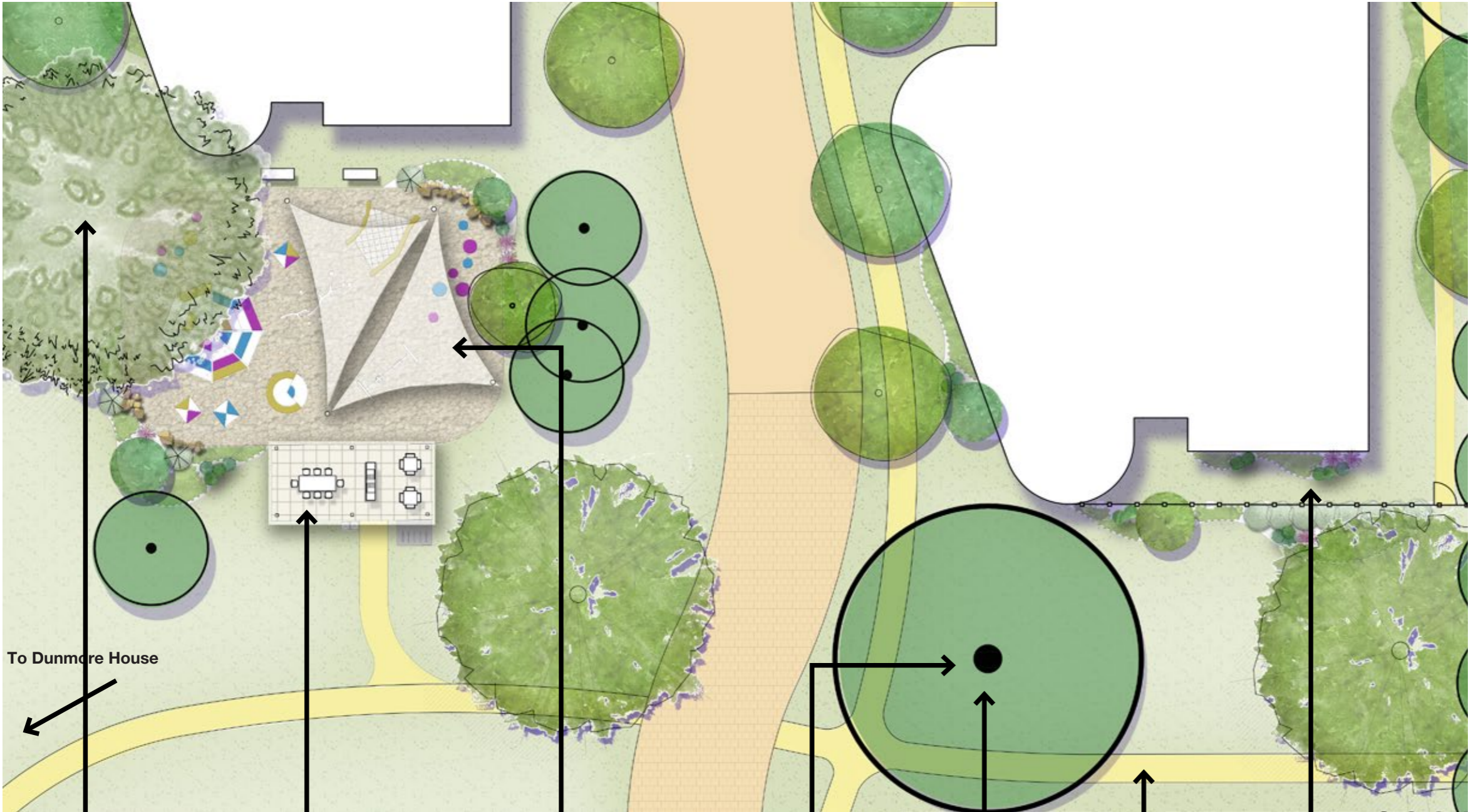


Community cafe and garden

SCALE 1:250 @ A3



Detail Plan - Dunmore House Playground



New Araucaria Pine Tree
As feature to heritage curtilage

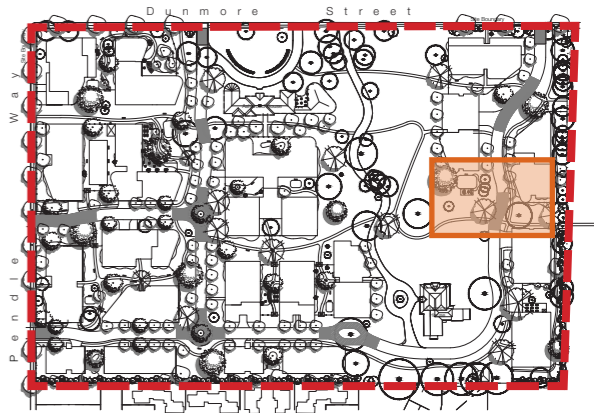
Large Shade Structure
With BBQ and fixed furniture for communal public dining

Playground
With nature play, garden beds, and shade element over

Existing heritage trees
Provides shade and amenity

Pedestrian Footpath
Access to former Bonds Spinning Mills redevelopment

Private Garden
With lockable gate entry from common public areas and fencing within to separate individual private courtyards.



KEY PLAN NTS



Fencing and textural planting to separate private courtyards



Pedestrian footpaths and planting

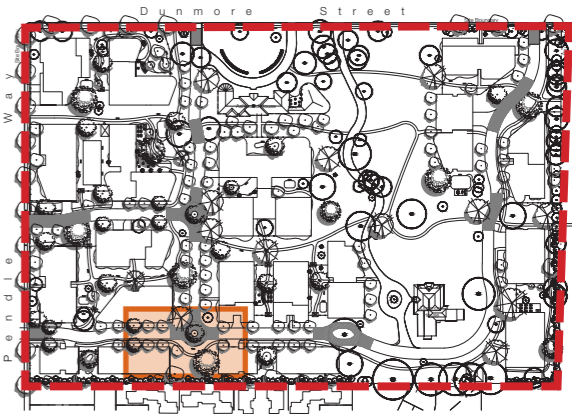
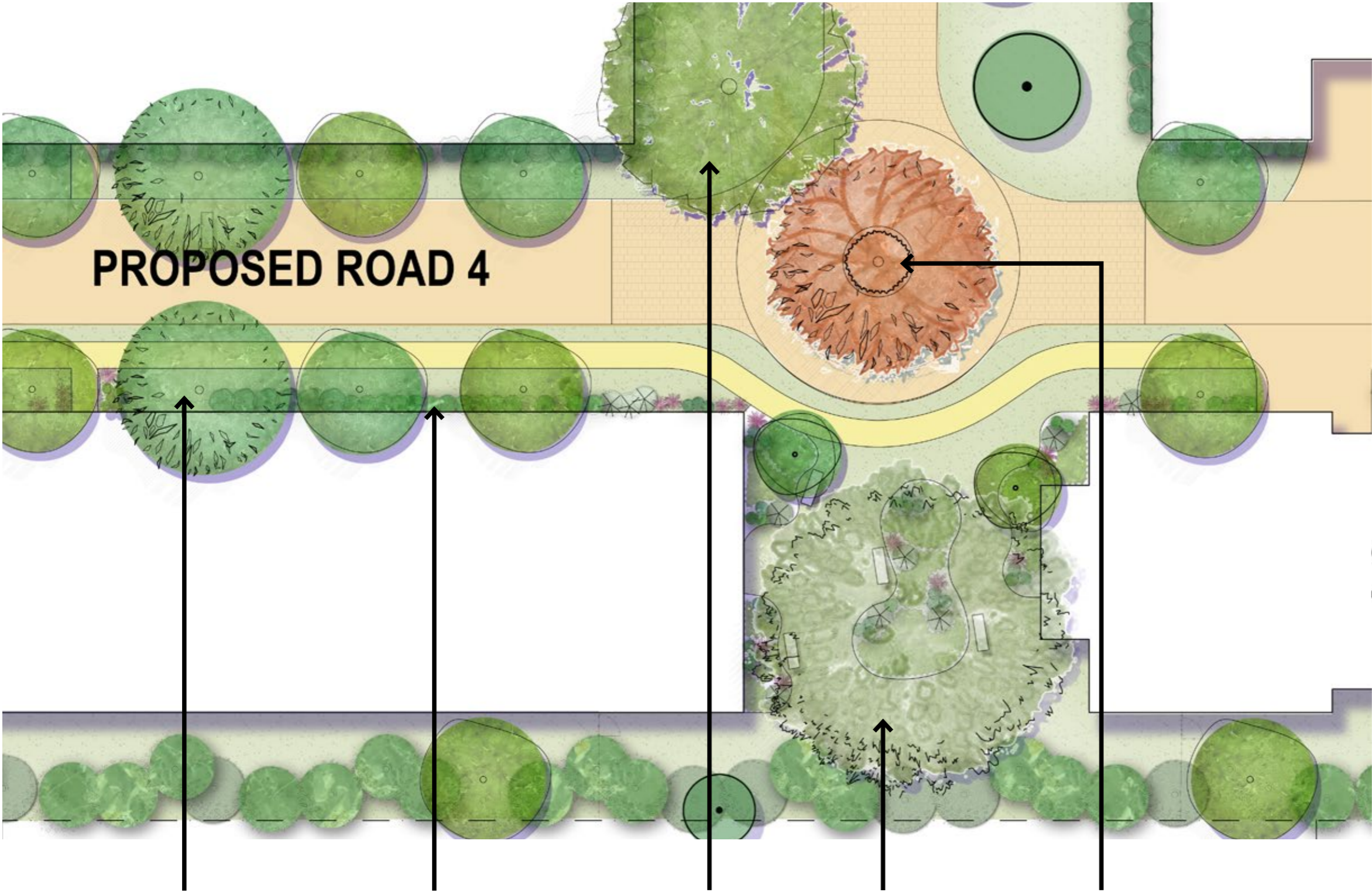


Playground with natural elements

SCALE 1:250 @ A3



Detail Plan - Streetscape



Feature deciduous tree to road junction



Shared streetscape with evergreen trees



Meandering path to pocket path

Evergreen Street Trees

Provides shade and scale to built form

Shrub and Groundcover Planting

To edge of built form to act as screen and provide greenery

Large Feature Evergreen Tree

To screen built form and provide greenery

Pocket Park

With meandering path, shade trees, textural planting and seating elements

Deciduous Tree to Road Junction

Wayfinding measure and feature element.

SCALE 1:250 @ A3



Site Sections - Streetscape

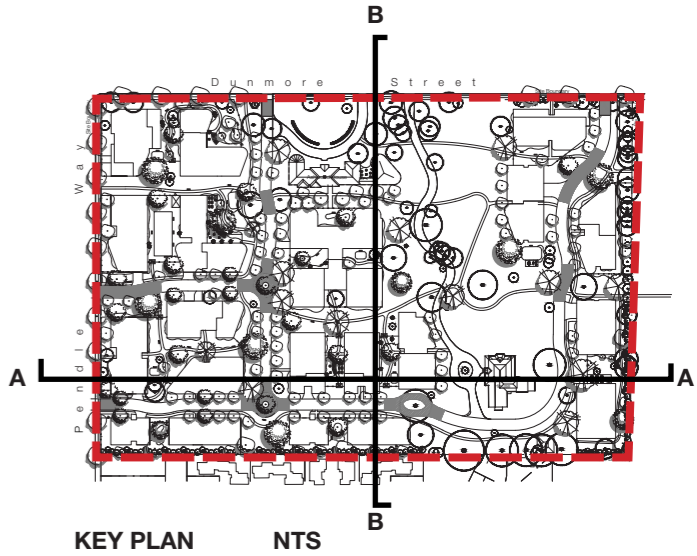


Section A



Section B

SCALE 1:1000 @ A3



Indicative Planting Character

Trees



Araucaria cunninghamii
Hoop Pine



Hymenosporum flavum
Native frangipani



Calodendron capense
Cape chestnut



Cedrus atlantica
Atlas cedar



Betula pendula
Silver birch



Malus floribunda
Crab apple

Shrubs



Pittosporum silver sheen
Silver pittosporum



Laurus nobilis
Bay tree



Hydrangea quercifolia
Oak leaf hydrangea



Buxus japonica
Japanese box



Rosa cv.
Roses



Lavendula cv.
Lavender



Juniperus chinensis
Chinese juniper



Plectranthus argentatus
Silver plectranthus

Groundcovers



Anemone hupphensis
Windsong lilly



Juniperus communis
Groundcover juniper



Viola hederacea
Native violet



Convolvulus mauritanicus
Blue convolvulus



Artemisia powis castle
Wormwood



Convolvulus cneorum
White convolvulus



Salvia Midnight blue
Blue salvia



Helichrysum petiolare
Licorice plant



Vinca cv.
Vinca